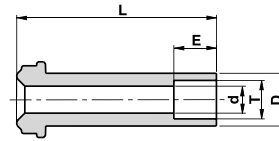


GSW

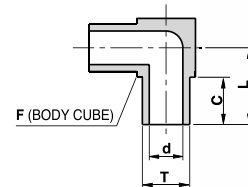
SOCKET WELD GLAND

Ordering Information	Face Seal Size	L		d		E		D		T
	inch	mm	inch	mm	inch	mm	inch	mm	inch	inch
V-GSW-1/8	1/8	17.8	0.70	2.4	0.09	2.5	0.10	5.1	0.20	1/8
V-GSW-1/4	1/4	33.3	1.31	4.6	0.18	7.1	0.28	8.9	0.35	1/4
V-GSW-1/4-W-0.75"	1/4	19.1	0.75	4.6	0.18	7.1	0.28	8.9	0.35	1/4
V-GSW-1/4-W-0.50"	1/4	12.7	0.50	4.6	0.18	7.1	0.28	8.9	0.35	1/4
V-GSW-3/8	1/2	38.1	1.50	7.1	0.28	7.9	0.31	15.2	0.60	3/8
V-GSW-1/2	1/2	38.1	1.50	10.2	0.40	9.6	0.38	15.2	0.60	1/2
P-GSW-3/4	3/4	50.8	2.00	15.7	0.62	11.2	0.44	22.4	0.88	3/4
P-GSW-1	1	56.4	2.22	22.1	0.87	15.7	0.62	30.2	1.19	1

ME-W

MINI ELBOW

Without shoulder



Ordering Information	L		C		d		F	T	W.T.	
	mm	inch	mm	inch	mm	inch	inch	inch / mm	mm	inch
V-ME-1/8-W	10.3	0.41	6.4	0.25	1.9	0.07	5/16	1/8"	-	0.028
V-ME-1/4-W	10.3	0.41	6.4	0.25	4.6	0.18	5/16	1/4"	-	0.035
V-ME-3/8-W	11.9	0.47	6.4	0.25	7.7	0.30	7/16	3/8"	-	0.035
V-ME-1/2-W	13.5	0.53	6.4	0.25	10.2	0.40	9/16	1/2"	-	0.049
V-ME-1/2-W W.T.=0.065	13.5	0.53	6.4	0.25	9.5	0.37	9/16	1/2"	-	0.065
V-ME-6MM-W	10.3	0.41	6.4	0.25	4.0	0.16	5/16	6mm	1.00	-
V-ME-8MM-W	11.9	0.47	6.4	0.25	6.0	0.24	7/16	8mm	1.00	-
V-ME-10MM-W	11.9	0.47	6.4	0.25	8.0	0.31	7/16	10mm	1.00	-
V-ME-12MM-W	13.5	0.53	6.4	0.25	10.0	0.39	9/16	12mm	1.00	-

Dimensions are for reference only, and are subject to change without notice.
When ordering, be sure to add the Surface-Finish Designator (either H or E) to the Part Number. (See Material Table, page 157).